

# New Policies for NEMS Races During 2021 Season

There are a handful of changes taking place this season to ensure that NEMS can safely hold races. Below is a summary of the changes that racers will see. There is also an info sheet for each item to help serve as a guide if needed.

## Pre-Race

- Race Registration Deadline
  - 12pm (Noon) 2 days prior to race
- COVID Questionnaires
  - **Form 1: Pre-Screen**
  - **Form 2: Day of Symptom Check**
- Both forms required to be completed before the deadline.
- If racer does not complete, they do not race. No exceptions.
- Links to forms will be emailed via SkiRaceReg and should take 1 min to complete.
- Make sure you can access internet/email on race day to receive Day Of Symptom Check Form.

## Race

- COVID Coordinator (new role)
- Assigned Bibs
- Masks/Face Covering Required
- Social Distancing Throughout
- Avoid Hanging Out at Start
- Clear Finish Area

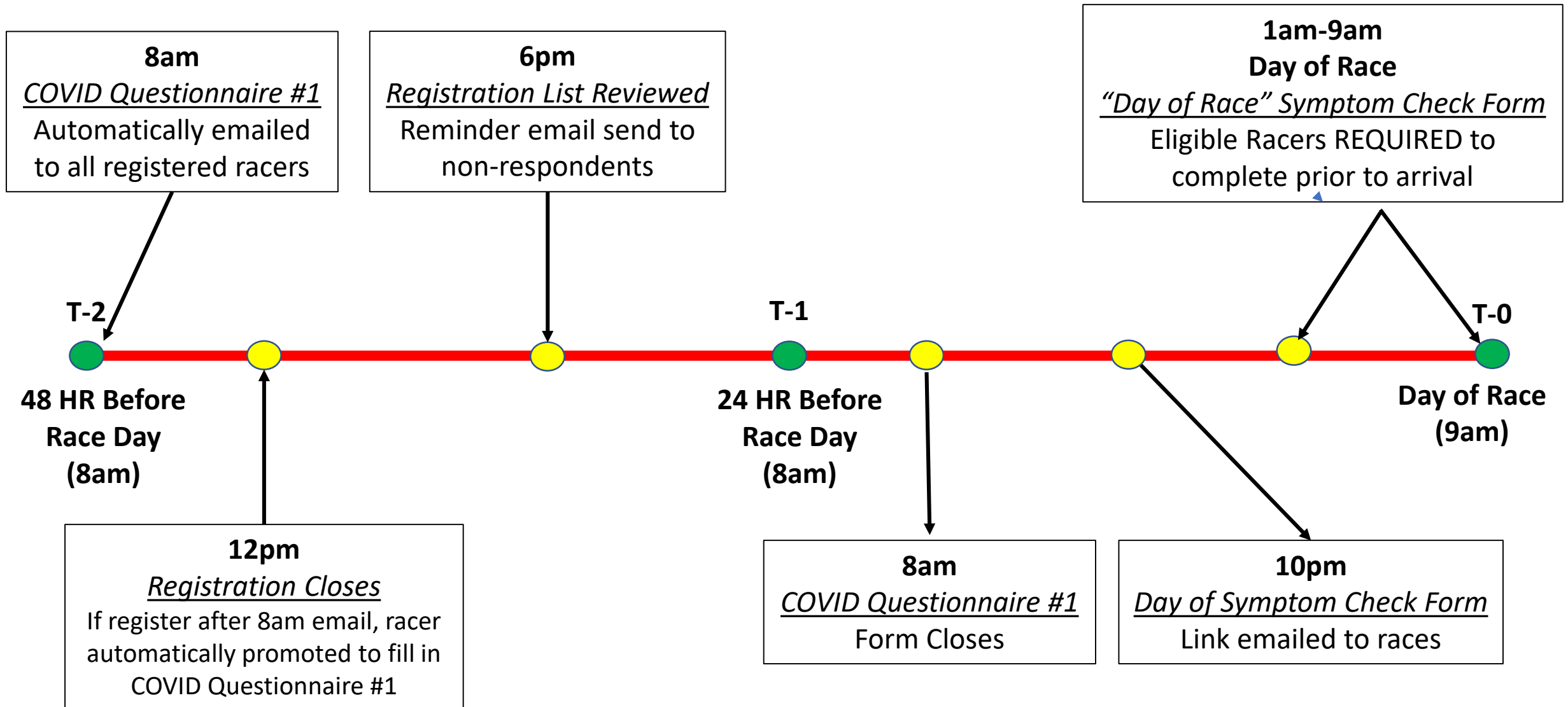
## Post-Race

- No Parties
- No Prizes or Awards
- Go Freeski or Go Home

## Other Items

- No Walk-Ins
- Race Fees:
  - DNS Fee Remains
  - Fees will vary between venues
  - New High School/College Price
- TEAM App

# Pre-Race Forms Timeline



# COVID Questionnaire #1: Pre-Screen

All registered racers are required to complete the below COVID Symptom Checklist between 48-24 hrs. prior to the mountain opening on race day.

- A link to the form will be emailed to racers via SkiRaceReg.
- Form must be completed within 24 hours of the start of race day (8am the day before race)
  - **Example:** If Friday race, Form 1 will need to be completed by 8am Thursday.
- A racer may be deemed to be “ineligible” based on response to questions. NEMS will notify racer.

## SkiRaceReg

Questions	
<input checked="" type="checkbox"/> Name	long text
<input checked="" type="checkbox"/> Email	long text
<input checked="" type="checkbox"/> Telephone	text
<input checked="" type="checkbox"/> Have you experienced any COVID symptoms in the last 14 days (e.g. cough, shortness of breath, fever, chills, muscle pain, headache, sore throat, new loss of taste of smell, vomiting, nausea, diarrhea)?	yn
<input checked="" type="checkbox"/> Have you had contact with persons displaying COVID symptoms in the last 14 days?	yn
<input checked="" type="checkbox"/> Have you traveled out of region* in the last 14 days? *Depending on your location "region" could mean county, a group of counties, state or other based on your state/county health order.	yn
<input checked="" type="checkbox"/> Additional Notes	long text

Prepopulated for you

- Racers are expected to answer questions truthfully.
- Please reference the [CDC Guidelines](#) to determine if it appropriate for you to participate
- Racers should reference their state’s guidelines on travel

# COVID Questionnaire #2: Day Of Symptom Check

All registered racers are required to complete the below COVID Day Of Symptom Checklist before 9am on race day.

- A link to the form will be emailed to races via SkiRaceReg.
- The email will come the night before, but the link will not be active until 1am on day of race.
- The questions are the same as Form 1. Questions can change during the season.
- A racer may be deemed to be “ineligible” based on response to questions. NEMS will notify racer.
- If a racer does not complete form, they are not allowed to race or be present in any section of the race arena

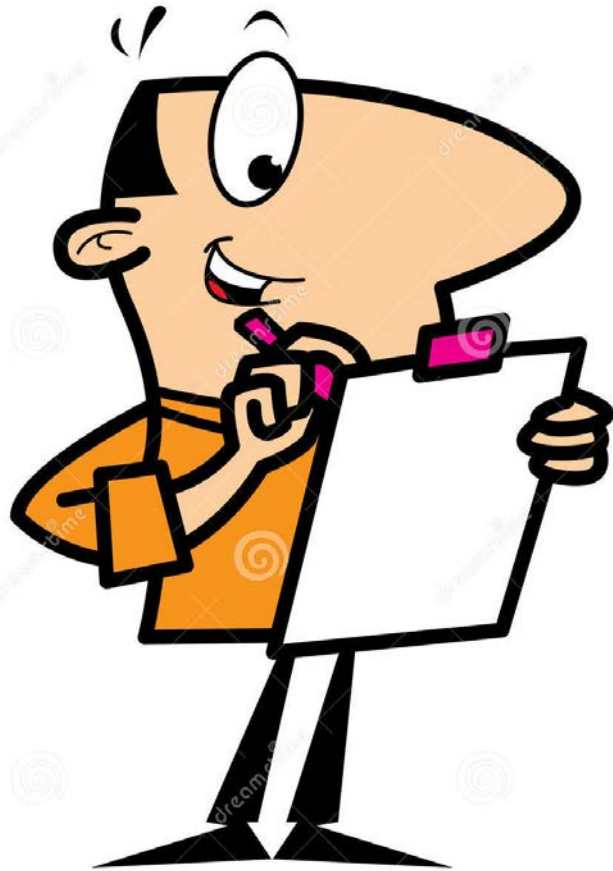
## SkiRaceReg

Questions	
<input checked="" type="checkbox"/> Name	long text
<input checked="" type="checkbox"/> Email	long text
<input checked="" type="checkbox"/> Telephone	text
<input checked="" type="checkbox"/> Have you experienced any COVID symptoms in the last 14 days (e.g. cough, shortness of breath, fever, chills, muscle pain, headache, sore throat, new loss of taste of smell, vomiting, nausea, diarrhea)?	yn
<input checked="" type="checkbox"/> Have you had contact with persons displaying COVID symptoms in the last 14 days?	yn
<input checked="" type="checkbox"/> Have you traveled out of region* in the last 14 days? *Depending on your location "region" could mean county, a group of counties, state or other based on your state/county health order.	yn
<input checked="" type="checkbox"/> Additional Notes	long text

Prepopulated for you

- Racers are expected to answer questions truthfully.
- Please reference the [CDC Guidelines](#) to determine if it appropriate for you to participate
- Racers should reference their state’s guidelines on travel

# COVID Coordinator



## What is the COVID Coordinator

- Member of Organizing Committee / Host Venue responsible for coordinating all COVID related policies and procedures
  - Central point of contact for COVID specific concerns:
    - Local rules on mass gatherings
    - State quarantine rules
    - Emergency protocols
  - Liaison to venue for COVID policies/procedures
  - Monitor compliance of symptom checks
  - Maintain contact info of race participants for contact tracing purposes
  - For more detail on COVID Coordinator role:  
<https://usskiandsnowboard.org/covid-19/return-competition>

## Who is the Race Coordinator

- Member of Organizing Committee / Host Venue
- Must be a USS&S Volunteer at a minimum
- Will be a part of the Race Committee – not a jury member
- **TD is NOT a COVID Coordinator**
  - NEMS will list the COVID Coordinator for each race in the TEAM App.

# Race Changes - Bibs



## Assigned Bibs

- All racers will be assigned a bib for season
- Age Classes will be allotted a block of bib #s
  - i.e. Class 3: Bibs 72-80
- Racers doing multiple race days will be assigned bibs in this block
- Racers only doing 1 day will be assigned a bib outside of block
- When returned, bibs will be properly cleaned and put back into circulation.

## Other Information

- Bib assignments will be listed in SkiRaceReg
- Bib Handoff – We will communicate where racers can pick up their bib on race day
- Racers to hold/maintain bib for season
- Bib Return – A mesh bag w/ a sign & pen will be at finish. Racer drop bib & write #
- **Non returned or damaged bibs – Racer charged \$50.** Every effort made to get bib back before charging.

# Race Changes – The Racecourse



**Mask/Face Covering MUST be worn at all times while in the race area.  
Exception is while in start and while racing on course**

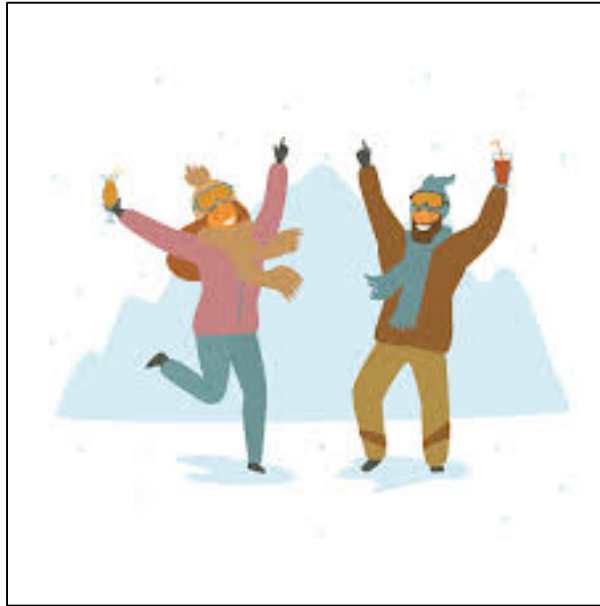
## **Inspection**

- Maintain social distancing while inspecting course
- Keep things moving! If you wish to spend more time at a spot, move off to the side so that others may freely inspect
- No assigned or limited inspection times. Normal process.

## **Live Race**

- Maintain social distancing while at start area
- Avoid being at start area more than 3 age classes ahead, if possible
- Immediately exit finish area and clear exit
- Put on clothing away from finish area and other racers

# Post Race



## Following the finish of the race

- Any racer needing to return bib should do so at the finish line
- No awards party will be held
- No prizes (door or class) will be given out at race
- Racers can free ski - must continue to social distance / wear a mask



# Other Items



## Race Day Walk-Ins

- NO walk-ins will be permitted this season. No exceptions.
- All registrations must be done online via [skiracereg.com](http://skiracereg.com)

## DNS Fee

- Historical policy of \$5 to remain in place.
- Racers encouraged to email Lucy ([NEMastersRA@gmail.com](mailto:NEMastersRA@gmail.com)) if need to miss race due to illness.

## Race Fees

- Prices will vary by mountain this season
- New price tier for high school/college racers

## Team App

- NEMS will be using the TEAM App for all race day communication.
- One-stop-shop for all race related items
- Highly encouraged that ALL racers download the App prior to race